



[www.cpl.asn.au/journal](http://www.cpl.asn.au/journal)

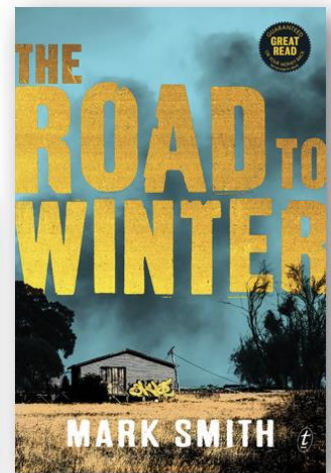


Your focus for  
Reading to  
Write

Common module: Reading to write



Module A



Module B



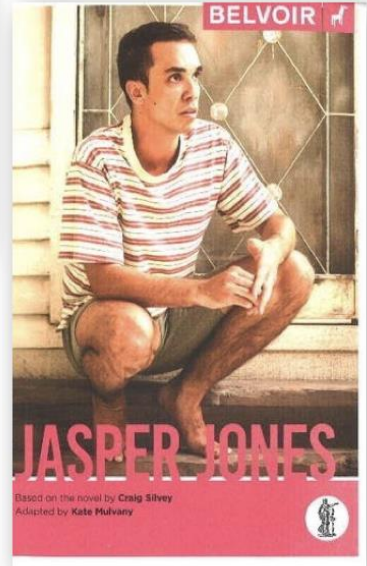
[www.cpl.asn.au/journal](http://www.cpl.asn.au/journal)



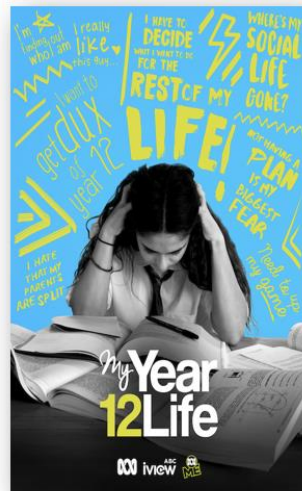
Common module: Reading to



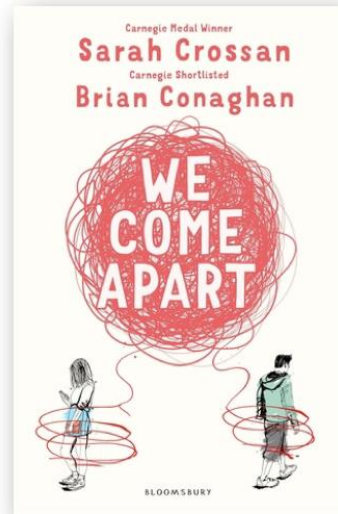
Module A



Common Module: Reading to Write



Module A



Module B





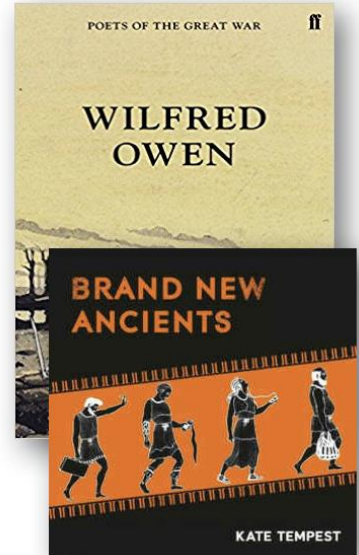
[www.cpl.asn.au/journal](http://www.cpl.asn.au/journal)



Common Module: Reading to Write



Module A



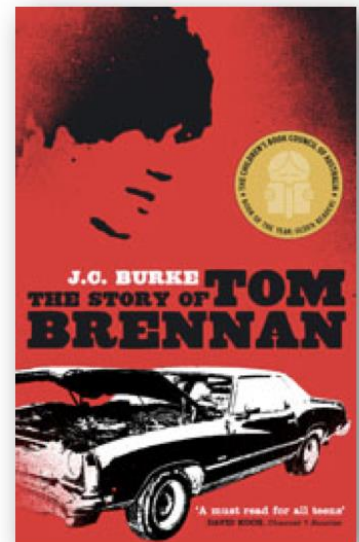
Module B



Common module: Reading to write



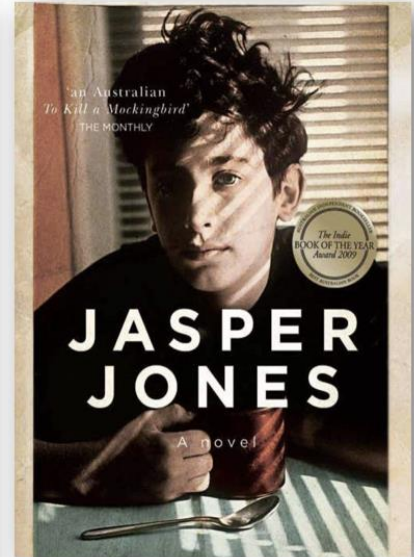
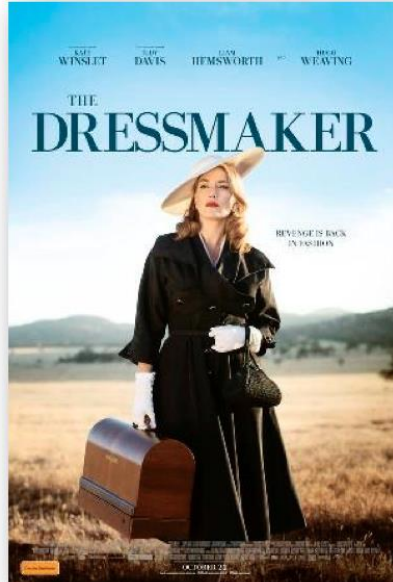
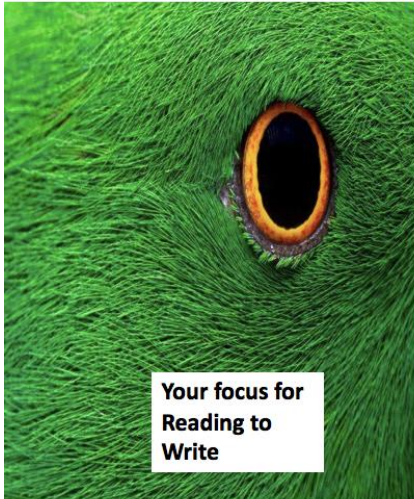
Module A



Module B



[www.cpl.asn.au/journal](http://www.cpl.asn.au/journal)



Common module Reading to write

Module A

Module B

## Ten narrative schemas to support Narratives that shape our world

From Brian Moon's *Introducing Literature* Chalkface 2018 pp. 222

Schema	Past Texts	More contemporary
The Hero's Journey	<i>Morte d'Arthur</i>	<i>The Lord of the Rings</i>
The Faustian Pact	<i>Dr Faustus</i>	<i>Picture of Dorian Grey</i>
The Tragic Downfall	<i>Othello</i>	<i>Citizen Kane /New Boy</i>
The Comedy of Errors	<i>The Comedy of Errors</i>	<i>Hunt for the Wilderpeople</i>
The Triumph of True Love	<i>Pride and Prejudice/ Much Ado About Nothing</i>	<i>Clueless</i>
The Doomed Romance	<i>Wuthering Heights</i>	<i>We Come Apart</i>
The Child's Story ( coming of age)	<i>Jane Eyre</i>	<i>Mustang</i>
The End of the World	<i>On the Beach</i>	<i>The Road / Station Eleven</i>
The Epic Adventure	<i>Heart of Darkness</i>	<i>Battlestar Galactica (TV series )</i>
The Traveller's Tale	<i>The Canterbury Tales</i>	The Simple Plan